

Leadership Geauga



Annual Report
2017-2018

103 South Street, Suite 1
Chardon, Ohio 44024

440-286-8115
info@leadershipgeauga.org
www.leadershipgeauga.org

 Find us on
Facebook
leadership.geauga

**THANK
YOU,
ERIC!**



Thank you Eric Wachob

We would like to thank Eric Wachob for his two years of service as the President of the Leadership Geauga Board of Trustees. A graduate of the Class of 2012 and owner of MJM Industries (Fairport Harbor, Ohio), Eric devoted his time as president to strengthening our infrastructure and operations, while implementing business best practices to ensure Leadership Geauga runs effectively and efficiently. Always willing to help out, Eric was a steady and dependable leader who always had our organization's best interest in mind.

Thank you Eric for your countless hours of service to Leadership Geauga!



A focus on alumni, our greatest asset **Melanie Scanlon, M.ED. Executive Director**

If there is any one thing I have learned in my two years as Executive Director, it is that people are the most important part of any community or organization. Geauga County is full of the most caring and inspiring individuals and I am reminded of that every day when I interact with our alumni community. Our alumni base is our greatest community asset and we are constantly looking for ways to engage and reengage alumni with both our organization and our community.

In our 23 year history we have graduated over 700 adult alumni and celebrated our 10th youth alumni class. We have alumni in every industry and community in our county. Alumni engagement was our theme for this year and I am proud to report increases in the number of opportunities provided for alumni to learn, connect and become inspired to get involved and give back in new and profound ways. Our focus on alumni engagement will be a trend that we carry with us as we look to next year and the on-boarding of a new, part-time staff person who will work to create new and innovative programs for our alumni cohort.

If it has been awhile since you have attended a program or event I invite you back to rediscover Leadership Geauga and your community. Geauga county needs educated and engaged citizens to move our community and organizations forward. And if we can serve you in a new or different way please don't hesitate to reach out and let us know!

Thank you for another great year,

LEADERSHIP GEAUGA

Organizational Overview



Leadership Geauga:

Leadership Geauga informs, educates and engages civic and business leaders, to inspire themselves towards personal and professional empowerment, to strengthen their organizations and serve their colleagues, consumers, and community.



Melanie Scanlon, M.Ed
Executive Director

Leadership Geauga Staff

Jamie Miller
Program Coordinator



Board of Trustees

Leadership Geauga is governed by a 15 person board

Eric Wachob- President
MJM Industries

Richard Frenchie
The Frenchie Group

Kimm Leininger
United Way Services of Geauga County

Frank Antenucci- Vice President
Geauga County Engineer's Office

Lori Gorrell
Upward Solutions coaching and consulting

Danielle Lynce
University Hospitals- Eastern Region

Sharon Roediger- Secretary
Laudato and Company

Dr. Scott Hunt
Cardinal Local Schools

Paul O'Reilly
O'Reilly Equipment

Andy Bushman- Treasurer
Progressive Insurance

Rebecca Klein
Geauga County Sheriff

Julie Weese
Kinetico, Inc.

Matthew Emrick
Junction Auto Family

Susan Kruger
Lake Hospital System

Joe Zulantz
Ten10 Design



2017-2018 YEAR IN REVIEW

LEADERSHIP GEAUGA

Organizational Highlights

**Alumni
leadership
workshops**



5

**Legacy
Participants**



6

**Alumni
socials**



7

**Community
speaking
engagements**



6

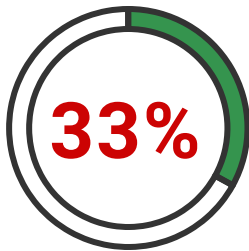
**Alumni who
attended
events**



278

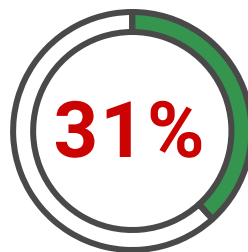
Areas of Growth

**Increased
alumni
programming**



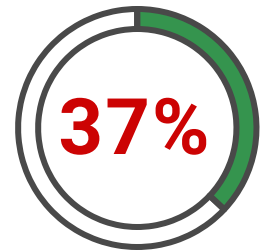
The percentage increase in number of alumni workshops and socials

**Increased
alumni
engagement**



The percentage increase in number of alumni who attended at least one leadership workshop or social

**Increased
alumni
participation**



The percentage of alumni who attended more than one event

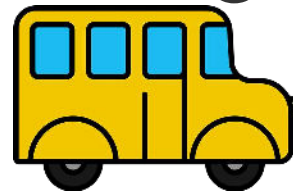
LEADERSHIP GEAUGA

Adult Program Overview

Adult participants

Eileen Adkins- 'Leen on Me Organizing
Nate Anderton- Junction Auto Family
Lorrie Benza- Bainbridge Township
Nancy Bushman- Independent Plant Broker
Sr. Emilia Castelletti, SND- Notre Dame-Cathedral Latin School
Sara Clemson- Maple Leaf Community Homes Inc.
LuAnn Coldwell- Kent State Geauga
Mike Coleman- Howard Hanna
Donald Crites- Fairmount Santrol
Jennifer Dorka- Russell Township
Jaime Fisher- Middlefield Care Center
Leslie Galicki- Lowe's Greenhouse
Mike Henry-Keller Williams - Henry Group
Charmaine Kepes- Sheoga Hardwood Flooring
Jon Klein- Company 119
Agnes Lane- University Hospitals Geauga Medical Center
Chris Maksim- Geauga Park District
Mary McFarland- Kinetico Inc.
Lou Ann Metz- Bainbridge Township Fire Department
David Munson- Lake/Geauga Educational Assistance Foundation
Tracy Richardson- United Way of Geauga County
Tom Ross- Geauga County Engineer
Thomas Rowan- Geauga County Sheriff
Lisa Sanborn- The Middlefield Banking Company
Jerry Schreffler- MJM Industries
Crystal Schwendeman- Skoda Minotti
John Shiffler- Shiffler Equipment Sales
Krystal Thompson- Geauga County Law Library/Bar Association
Tamee Tucker- iSTEM Geauga Early College High School
Susan Wieland- Geauga County Prosecutor's Office
Patty Willson- Lake Health

Highlights



13 program days



The number of Geauga county program stops and community leaders our class experienced



LEADERSHIP GEAUGA

Adult Program Experience



In their words

The percentages below indicate how many adult program participants **strongly agree or agree** to the following statements regarding their experience in the 2018 class.

100%
Agree or
Strongly
Agree

The program
was worth
the time and
tuition

100%
Agree or
Strongly
Agree

I built
stronger
community
connections

100%
Agree or
Strongly
Agree

I will be
a better
employee
due to my
participation

100%
Agree or
Strongly
Agree

I am proud
to be a
Leadership
graduate

What our graduates had to say:

"This program was exceptional"

"BEST WORK EXPERIENCE EVER!"

"Broadening my personal network was so beneficial!"

"I AM INSPIRED TO GIVE BACK!"

More Clearly Defined Program Learning Outcomes

A highlight from this program year was the introduction and implementation of leadership learning outcomes into the adult and youth programs. These clearly defined learning outcomes were brought into orientation, retreat and the issue days to provide more intentional opportunities for leadership growth and development.

We strive to develop the following competencies through our adult program experience:

Growth Minded - Collaboration - Social/emotional intelligence - Servant Leadership
Effective Communication - Change agent (innovation) - Relationship building

LEADERSHIP GEAUGA

Adult Program Experience

The percentages below indicate how many adult program participants **strongly agree** or **agree** to the following statements regarding their experience in the 2018 class.

96%
Agree or
strongly
agree



96%
Agree or
strongly
agree

96%
Agree or
strongly
agree



Our participant experience was enhanced in 14 out of the 16 components that we evaluate!

We are continuing to enhance the impact and content presented to our class!

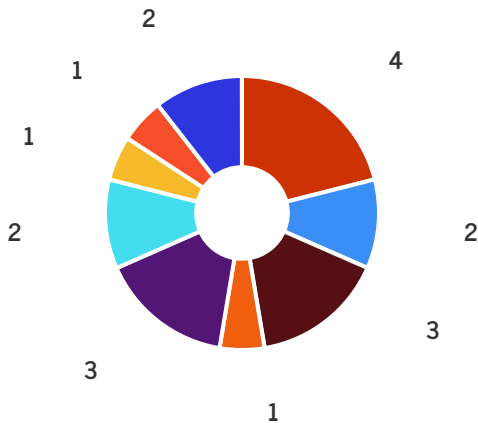
LEADERSHIP GEAUGA

Youth Program Experience



Lead. Serve. Discover.

Participation by school



- Chardon
- iStem
- Cardinal
- Chagrin Falls
- Berkshire
- Hershey Montessori
- Lake Catholic
- West Geauga
- NDCL



The program includes a shadowing experience at University Hospitals Geauga Medical Center

Youth Program Sponsor



12

program days

144

Touch Points

The number of program stops and community leaders our class experienced

Developing Servant Leaders

The Youth Class of 2018 was challenged to identify an area of concern in our community, develop a course of action to help, and complete a service project during the year.

Small group projects included:

- School supply drive to benefit St. Marys School
- Food drive to benefit local food banks
- Animal supply drive to benefit Rescue Village
- Clean up at Geauga Parks
- Conversation buddies at

During the process, the groups successfully navigated through obstacles, engaged their community, and held themselves accountable for the success of the project. In addition to their learning, they made our community a better place for all!

LEADERSHIP GEAUGA

Youth Program Experience

100%
Agree or
strongly
agree

I experienced
valuable
personal
development

100%
Agree or
Strongly
Agree

I will be a better
leader/team
member

94%
Agree or
Strongly
Agree

I built stronger
connections in the
community

100%
Agree or
Strongly
Agree

I plan to be
involved in the
community in a
new or different
way



LEADERSHIP GEAUGA

Emerald Ball:

New venue, new faces, new records set!



On March 3, 2018 three hundred forty Leadership Geauga alumni and community leaders gathered to celebrate the commitment to youth leadership development and community engagement of Geauga County 4-H, who was awarded the 2018 Emerald Leader.

We brought together a record setting crowd for a night we will never forget. Through the generosity of our alumni and community leaders we were able to raise \$14,094, which was donated to Geauga County 4-H. This money will be used to provide scholarships to 4-H Camp Whitewood and will be seed money for a new leadership experience for older youth.

Our success was made possible by all of the generous and community focused individuals who attended. Thank you from the bottom of our hearts for a night we will never forget! A special thank you goes to our title sponsor, Junction Auto Family, for their long standing and unwavering support to our community!

Past Emerald Leaders

2017- Scott Hildenbrand
2016 - Kevin O'Reilly Sr.
2015 - Geauga Humane Society- Rescue Village
2014 - Daniel McClelland
2013 - Kathy Leavenworth
2012 - Jim Patterson & Tracy Jemison
2011 - Thomas Benda & Fieldstone Therapeutic Riding Center
2010 - Kimm Leininger & The Interact Club of Chardon

2009 - Chuck Fowler & Paul Newman
2008 - Deborah O'Connor & Richard Frenchie
2007 - Howard Bates & The Burton-Middlefield Rotary
2006 - Junction Auto Family & Dick Moss
2005 - Alice Sems
2004 - Sr. Sandy Nativio, SND
2003 - Gordon Safran
2002 - Bill Prior
2001 - Jeff Keener

Emerald Ball Sponsor

JUNCTION AUTO FAMILY
★ Service and Dependability Since 1931 ★

Thank you!

Leadership Geauga would like to extend thanks and appreciation to the individuals and organizations who donated to the 2018 Emerald Ball. Your partnership helped us achieve our goals for the year.

Emerald Ball Event Sponsor



EMERALD SPONSORS

Arms Trucking
Hexpol Compounding
Kineticco
MJM Industries
Waste Management

SAPPHIRE SPONSORS

Fairmount Santrol
Kent State University Lakeland
Community College
Middlefield Banking Company
Preston Superstore

AMETHYST SPONSORS

Company 119
Huntington Bank
Mapleview Country Villa
Richard and Christine Frenchie
Ten10 Design
Walder for Auditor

Donors:

Advance Auto Parts
African Safari Wildlife Park
Akron Rubberducks
Alador Kennels
Apollo Products, Inc.
APT Electric
Arms Trucking- Howard & Pat Bates
ASAP porta-potty
Ashley Bieder
Auburn Bainbridge Excavating
Avanti Salon
Beaches & Dreams
Beans Coffee Shop
Benner's Meadow Run
Berkshire Board of Ed Athletics
Bertram Inn
Blazin' Bills
Bloom Brothers
Brockway Bond Insurance
BSB Partners
Buckeye Chocolates Cafe Burntwood
Tavern
Burr Funeral Home
Burton Chamber of Commerce
Burton Library
Cabana's Island Restaurant
Cain Park

Carol Matchinga- Mary Kay
CCM Rental
Chagrin Arts
Chagrin Falls Film Fest
Chagrin Valley Beagles
Chagrin Valley Little Theatre
Chagrin Valley Roller Rink
Chagrin Valley Times
Chardon Family Chiropractic Clinic
Chardon Family Eyecare
Chardon High School
Chardon Jewelers
Chardon Lakes Golf Course
Chardon Polka Band
Chardon Smile Center
Chardon Tavern
Chardon Welding
Cherie Dzura, Premier Designs
Chesterland Tavern
Gauga County Sheriff's Office
City of Chardon Fire Department
City of Chardon Recreation Dept.
Clark Family Design Co.
Cleveland Art
Cleveland Auto Dealers Association
Cleveland Browns
Cleveland Cavaliers
CLE Clothing Co
Cleveland Metroparks Zoo
Cleveland Monsters
Cleveland Orchestra
Cleveland Playhouse
CLN
Coffee Corners
Congin's Pizza
Consumer Tire
COSI
D.S. Cakes & Sweet Café
Disney World
D'Marie Gourmet Foods
Dr. Anne Clouser, DDS
Dr. Rick Scherbauer
Emeth Gymnastics
Exscape Designs
LLC Fast Lane Truck Accs.
Fig Leaf Coffee Company
Fig Tree Bulk Foods
First Strike
FlipSide
Foundations Health Solutions
Four Green Fields Garden Center
Fowler's Mill Golf Course
Fowler's Milling Company
Gauga County 4-H

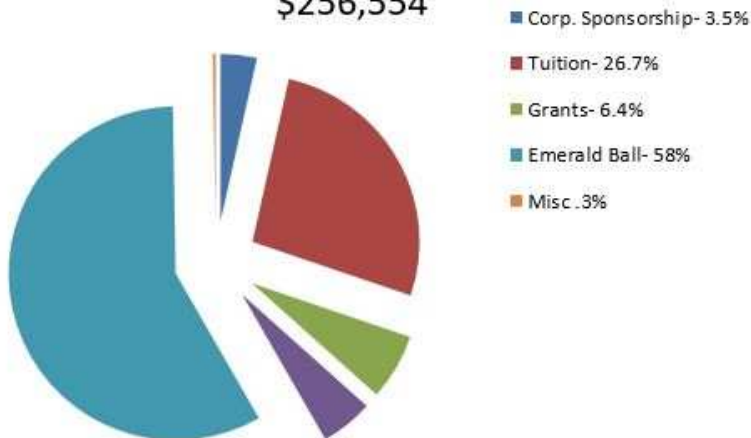
Gauga County Maple Leaf
Gauga Family YMCA
Gauga Farm Bureau
Gauga Feed
Gauga Lyric Guild
Gauga Park District
Gauga Times Courier
Gauga Vision
Genevieve Kelly
Glidden House
Good News
Goodtimes Cruise
Gotta Groove Records
Grand River Cellars
Great Lakes Brewing
Great Lakes Theater
Habitat for Humanity
ReStore
Hastings Dairy
Heather Prayner- Scentsy
Heidi Campany Photography
Heinen's
Hillbrook Club
Hunger Squad
Interstate towing
Jessica Anderton
John Anthony of Novelty
Just for the Fun of It Honda
Kathy McMaster
Kineticco Incorporated
Lake County Captains
Lakeview Cemetery
Legend Lakes Golf Club
Life Safety Systems LLC
LineX of Streetsboro
LOCLE Box
Longaberger- Carol Mulhern
Lowes Greenhouse
LuLa Roe- Christy Robbins
Lyndsey Conforte
M Italian
Ma and Pa's Gift Shack
Maggie's Doughnuts
Marci's Hair on the Square
Mary Yoder's Amish Kitchen
Mazzulo's
McCaskey Landscaping
Mid American Conference
Middlefield Post
MJM Industries
Mock, Rob & Lora
Music Box Supper Club
NDS Orthodontics
NEO Electric Supply

Ohio State Reformatory
Once Upon a Time
Photography
O'Reilly Equipment
Party Loft
Perplexity Games
Pettiti's Garden Center
Pickwick & Frolic
Pine Lakes Lodge
Pioneer Waterland
Pittsburgh Steelers
Playground World
Powderhorn
Precious Cargo
Punderson Manor House
Quail Hollow Resort
Rabbit Run Theater
Ramble Inn
Rep. John Patterson
Rep. Sarah LaTourette
Rescue Village
Ripley Enterprises
Robert Wantz
Roediger Chiropractic
Ronyak Paving
Sandridge Golf Club
Skoda, Minotti & Co
Somrack Meadows Farm
St. Denis Golf & Party Center
St. Mary's Banquet Hall
Sugar Pines Farm
Sweet Grace Anna's
Take the Shot Photography
ten10 Design
The Gauga Times Courier
The Glidden House
The Hills Skilled Nursing
Facilities
The Nest
The Smith Restaurant
Thraher, Dinsmore & Dolan
Tiny Stitches Quilt Shop
Tom's Foolery
Troy Duncan
Truline Industries
Ty Kellogg
Urban Grower's
Valley Art Center
Viny's
Waste Management of Ohio
White House Chocolates
Wilderness Voyageurs
Yours Truly
Zestive parties with a twist

Financial Overview

Revenue 2017-18

\$256,554



Revenue

Leadership Geauga's operating revenue was up 33% this year due to our largest and most successful Emerald Ball and two new grants.

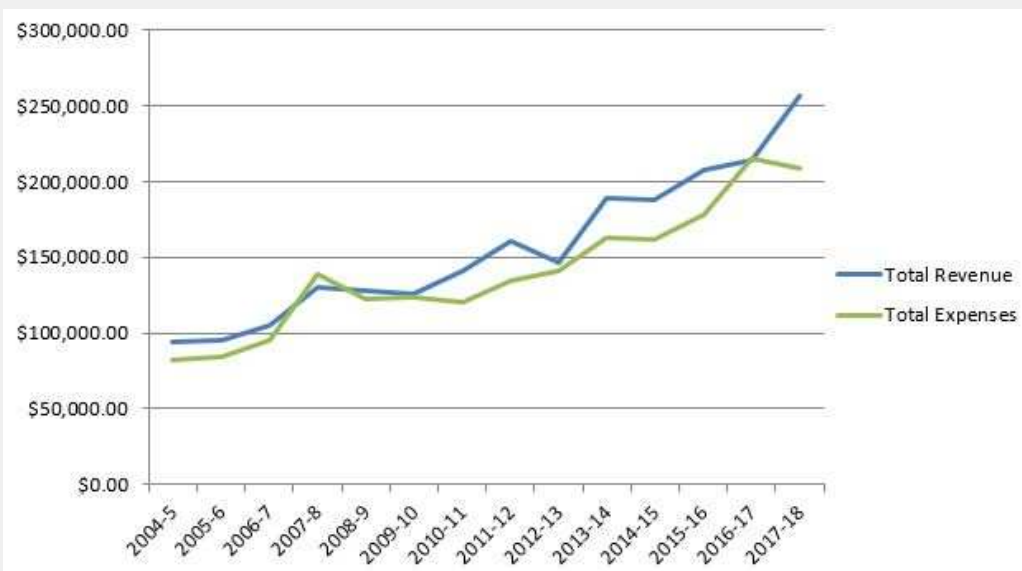
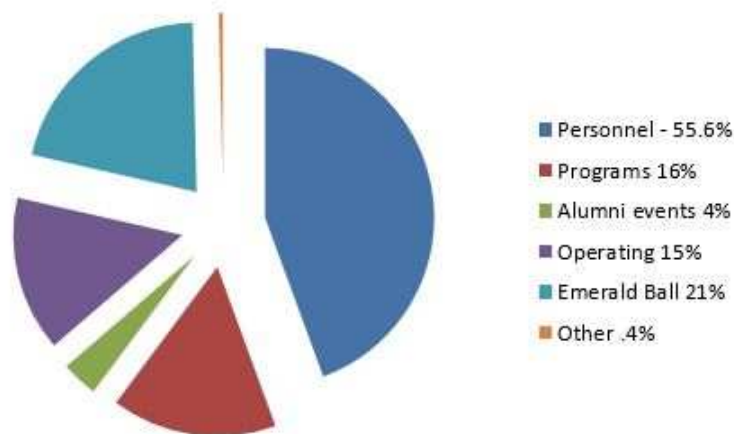
Expenses

Our 2017-2018 operating expenses reflect a decrease of 4%.

Financial management is provided by the Board of Trustees Finance Committee, chaired by Treasurer Andy Bushman.

Expenses 2017-18

\$208,832



Thank you!

Leadership Geauga would like to extend thanks and appreciation to the individuals, alumni and businesses who contributed to Leadership Geauga over the past year!

Alice Munn
Andrew Bales
Andy Bushman
Ann Fairhurst
Arms Trucking
Auburn-Bainbridge Excavating
Beaches and Dreams Travel Co.
Bev McClelland
Blake Rear
Brenda Hastings
Brian Brockway
Carol Gardner
Caroline Kovac
Century 21 Realty
Charles Hesse
Christine Steigerwald
Chuck Walder
Claudia Toth
Cleveland Foundation
Company 119
D. Kevin O'Reilly Co., LPA
Dale Diemer
Daniel Bond
Daniel McClelland
Dawn Farrell
Denise Toth
Dickerson Dental Studio, Inc.
Effectium, LLC
Emilie Gottsegen
Exscape Design
Fairmount Santrol
Farm Bureau
Fitch and Fitch
Frank Antenucci
Gauga County Bar Association
Gauga County Sherriff's Office
Gauga Door
Gauga Park District
George Hess II

Giant Eagle- Bainbridge
Glen Peck
Heritage Meats
J.F. Durante and Associates
James Heslop
James Knapp
Jan Fitts
Jay Giles
Jeff Richard
Jenn Bartone
Jimmye Ardo
John Copen
Julie Weese-Gorenc
4-H Junior Leaders
Karen Endres
Katie Schaab
KC Henry
Keller Williams- Geauga Group
Kenneth Okeson
Kent State University- Geauga
Kinetic
Lake Health
Laudato & Company
Lee Imhof
Linton Sharpnack
Lisa Lowry
LOCLE BOX LLC
Lynda Nemeth
Lynnette Stuart
Madelon Horvath
Marcia Owen
Marilyn Harman
Mary Beth Rumburg
Mary Gerbasi
Mary Jo Stark
Matt Emrick
Melissa Raines
Michael Farrell
Michael Scanlon
MJM Industries

Nancy Santilli
NDS Orthodontics
Notre Dame Schools
O'Reilly Equipment
Pam Plott
Patterson's Fruit Farm
Paul Conley
Paul Hederstrom
Payne & Payne Builders
Peggy Secura
Penny Olencki
Randy Sharpe
Ravenwood Mental Health Center
Red Key Network
Rescue Village
Robin Emrick
Roediger Chiropractic, Inc.
Rose Nemunaitis
Royle Insurance Agency
Russell Township
Ruth Aster
Sally Bell
Scott Hunt
Sisters of Notre Dame
Stacia Clawson
Sugar Pines Farm
Ten10 Design
Terri McIntee
The Bookkeeping Group
Thomas Clark
Township Trustee Association
Tracy Jemison
United Way Services of Geauga
County
University Hospitals Geauga Medical
Center
Upward Solutions Coaching &
Consulting
Victoria Pate

Why Leadership Geauga

Benefits to the individual:

- Leadership skill development and increased awareness of individual leadership style and values
- Increased knowledge of Geauga county and the organizations and leaders who live and work here
- Deepened network of committed and engaged colleagues for individual, business and community advancement
- Opportunities to get involved and give back to the community

Benefits to the employer:

- Leadership training for increased individual and organization effectiveness
- Exposure and awareness of the needs and opportunities in our community
- Broadening of organizational network and collaborative opportunities
- Demonstration of the organization's commitment to community and improving Geauga county

Benefits to the community:

- A cohort of committed and educated civic leaders
- Board and volunteer referrals from program graduates
- Opportunities for collaboration and cross sector engagement
- Developing leaders ready to respond to the opportunities and challenges facing our community



What is ahead?



New website and alumni directory:

We will be providing an easier way for you to connect with alumni and fellow class members through our newly refreshed website and alumni directory. If you don't believe we have your updated contact information please call our office or email a staff person!



Strengthened leadership development

We have heard from alumni and recent graduates that you would like more leadership development embedded into the program and our program committees are working hard to enhance the leadership training we provide. Stay tuned for more information on how we are advancing our program!

103 South Street, Suite 1
Chardon, Ohio 44024

440-286-8115
info@leadershipgeauga.org
www.leadershipgeauga.org



leadership.geauga